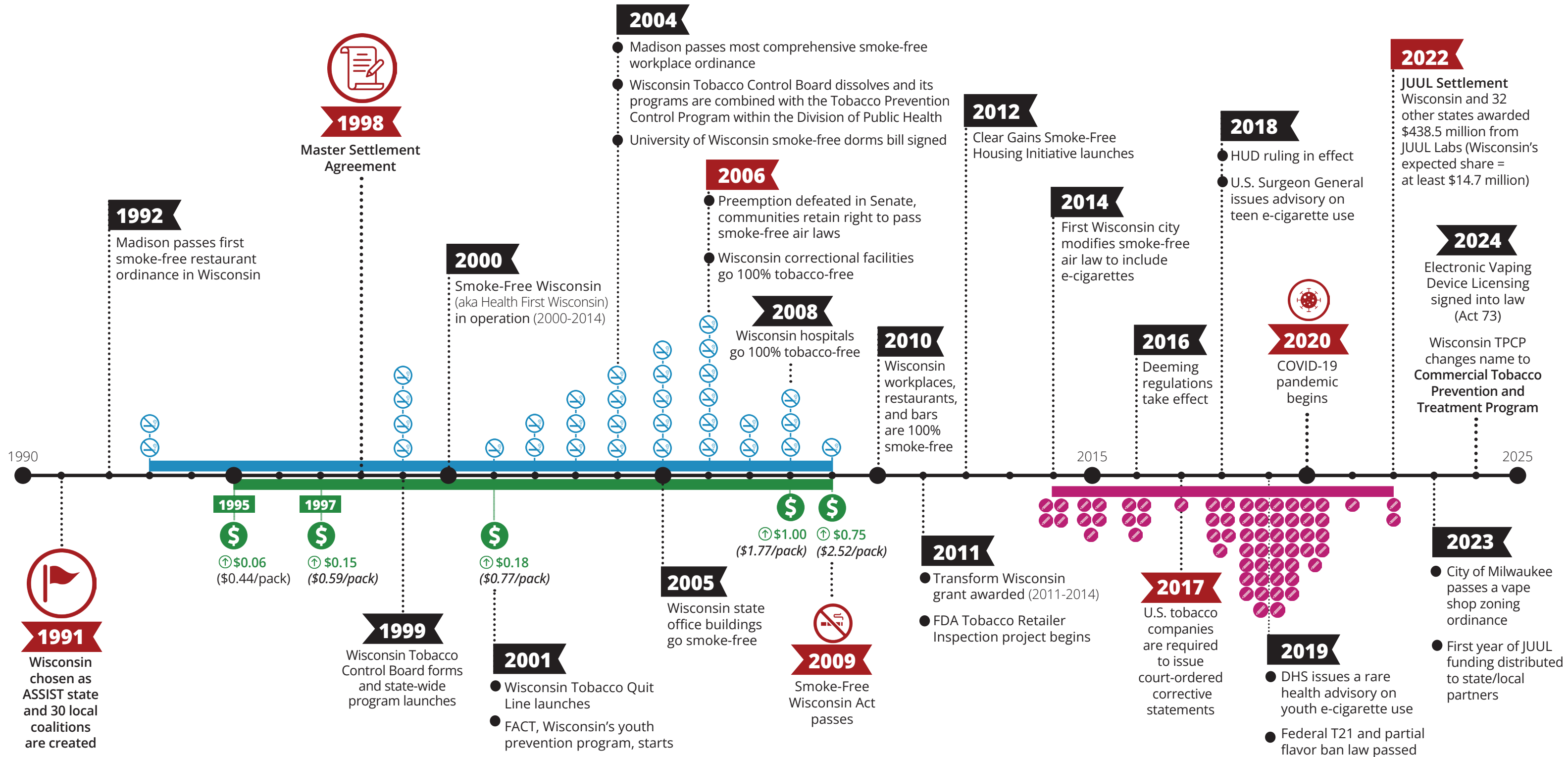


Wisconsin Commercial Tobacco Prevention and Treatment Efforts



<p> Wisconsin communities that passed smoke-free policies</p> <ul style="list-style-type: none"> 1993 - Middleton and Shorewood Hills 1999 - La Crosse, Kenosha, Ashland, and Fond du Lac 2001 - Neenah 2002 - Onalaska and Holmen 2003 - River Falls, West Salem, and Janesville 2004 - Oshkosh, Phillips, Wausau, and Bristol 2005 - Madison, Appleton, Plover, Stevens Point, and Buchanan 2006 - Kaukauna, Menomonie, Park Ridge, Wauwatosa, Little Chute, and Combined Locks 2007 - Beloit and Kimberly 2008 - Marshfield, Eau Claire, and Fitchburg 2009 - Shorewood 	<p> Wisconsin communities that amended smoke-free policy to include e-cigarettes</p> <ul style="list-style-type: none"> 2014 - Onalaska, Ashwaubenon, Greenfield, and Marshfield 2015 - Janesville and South Milwaukee; Florence, Portage, and Dane Counties 2016 - Beloit Township, Juneau, Madison, Wausau, and West Allis 2017 - Portage 2018 - Beaver Dam, Franklin, Milwaukee, Oak Creek, Weston, Altoona, Union Grove 2019 - Appleton, Fond du Lac City, Oregon, Stoughton, Waunakee, Hales Corners, Kenosha, Wauwatosa, Neenah, Cudahy, Kimberly, Mauston, Shorewood, Middleton, Watertown, Beloit, Broadhead, Glendale, Fox Point, Brown Deer, Bayside, Whitefish Bay, Reedsburg, Superior, Horicon, Edgerton, Waterford, Caledonia, Fitchburg, and Polk County 2020 - Oshkosh, Sturgeon Bay, Ashland, La Crosse, Cottage Grove, Baraboo, Eau Claire, Sun Prairie, and Burke 2021 - Peshigo 2022 - Little Chute and Merrill
<p> Cigarette Tax Increase</p>	